



N2-Au PENDANT

DESCRIPTION

Rotationally-symmetrical, hand-sculpted pendant lamp. Solid wood body, two lamps, gold/silver leafing on interior of lamp housing. Suspended via lamp wires from a canopy mounted directly to junction box

UL STATUS

UL listed

DIMENSIONS

23" x 7" x 6" (drop variable)

LIGHT SOURCE

2 dimmable LED bulbs, 60W, 2700k

CANOPY STYLE

please see CANOPY STYLES on page 28 for details

LEAD TIME

4 - 6 weeks

NET PRICE

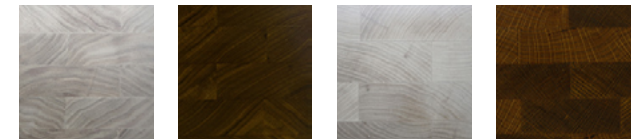
*call/email for price

CUSTOMIZATION

some custom options are available for this piece; please call/email for more information

MATERIALS/FINISHES

The N2-Au Pendant is available in bleached cherry, black walnut and bleached walnut in a clear lacquer finish; the stained white oak (shown above) features a hand-rubbed oil & wax finish



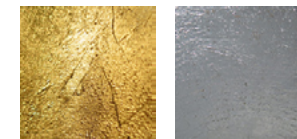
Bleached Cherry

Black Walnut

Bleached Walnut

Stained White Oak

LEAFING OPTIONS



Gold Leaf

Silver Leaf