



N3-Au CHANDELIER

DESCRIPTION	Rotationally-symmetrical, hand-sculpted pendant lamp. Solid wood body, gold/silver leafing on interior of lamp housing. Suspended via lamp wires from a 3-armed canopy (36" dia.), mounted directly to junction box
UL STATUS	UL listed
DIMENSIONS	36" x 36" x 7" (drop variable)
LIGHT SOURCE	dimnable LED bulbs (three 75 W, one 100 W), 2700 k
CANOPY STYLE	please see CANOPY STYLES on page 28 for details
LEAD TIME	6 - 8 weeks
NET PRICE	*call/email for price
CUSTOMIZATION	some custom options are available for this piece; please call/email for more information

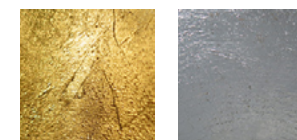
MATERIALS/FINISHES

The N3-Au Chandelier is available in bleached cherry (shown above), black walnut and bleached walnut in a clear lacquer finish; the stained white oak features a hand-rubbed oil & wax finish



Bleached Cherry Black Walnut Bleached Walnut Stained White Oak

LEAFING OPTIONS



Gold Leaf Silver Leaf