

N2 DESK

DESCRIPTION

Rotationally-symmetrical, hand-sculpted desk made from solid, stacked-laminate wood construction with tempered glass top

DIMENSIONS OF BASE

40" x 16" x 28.5"

DIMENSIONS OF GLASS

52" x 22" x 0.5"

LEAD TIME

12 weeks

NET PRICE

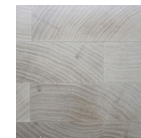
*call/email for price

CUSTOMIZATION

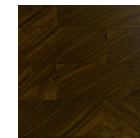
some custom options are available for this piece; please call/
email for more information

MATERIALS/FINISHES

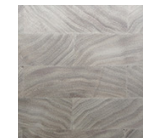
The N2 Desk is available in bleached cherry (shown above), black walnut and bleached walnut in a clear lacquer finish; the stained white oak features a hand-rubbed oil & wax finish



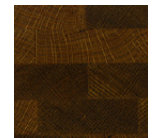
Bleached Cherry



Black Walnut



Bleached Walnut



Stained White Oak