



## N2 BENCH

### DESCRIPTION

Rotationally-symmetrical, hand-sculpted bench made from solid, stacked-laminate wood construction

### DIMENSIONS

52" x 16" x 18"

### LEAD TIME

10 weeks

### NET PRICE

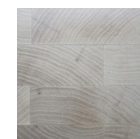
\*call/email for price

### CUSTOMIZATION

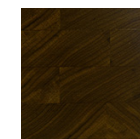
some custom options are available for this piece; please call/email for more information

### MATERIALS/FINISHES

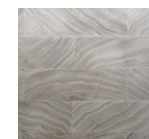
The N2 Bench is available in bleached cherry (shown above), black walnut and bleached walnut in a clear lacquer finish



Bleached Cherry



Black Walnut



Bleached Walnut