

AARON SCOTT DESIGN



WWW.AARONSCOTTDESIGN.COM

INFO@AARONSCOTTDESIGN.COM

BROOKLYN, NY +1 541 227 1614

## 2017 CATALOG





Aaron Scott Design creates one-of-a-kind as well as commissioned works of functional design including furniture, lighting, and architectural installations. Rooted in art and disciplined by engineering, works by Aaron Scott Design are hand-crafted with mathematical rigor, operating in the interstices of art and design. His furniture explores the relationship between objects and perception, and is informed by his work in conceptual art and filmmaking. He regards his design works as explorations in spatial and temporal concepts.

From his childhood in the forests and mountains of the Pacific Northwest, Aaron Scott has been influenced by the formal complexities found in nature – skeletal systems, plant forms, topography and cellular structure; he has also had a lifelong interest in mathematics, including structural engineering, non-euclidean geometries, rotational symmetries, topology and tensile structures. He approaches each piece as a unique experiment in spatial dynamics.

Aaron Scott studied philosophy at the University of Colorado at Boulder, followed by graduate work in fine art and filmmaking at San Francisco Art Institute. He moved to New York City in 1998 to make art and films. His design practice began when he started making functional objects for friends, artists and galleries, which led to commissions for furniture and lighting. He continues to reside and work in New York City, with simultaneous practices in art and design.

AARON SCOTT DESIGN



WWW.AARONSCOTTDESIGN.COM

INFO@AARONSCOTTDESIGN.COM

BROOKLYN, NY +1 541 227 1614

## CONTENTS

N-series lighting	4 - 13
RW-series lighting	14 - 16
Misc. lighting	17 - 18
N-series furniture	19 - 26
Camille furniture	27 - 28
Canopy styles	29
Materials, maintenance & care	30
Samples, payments & shipping	31



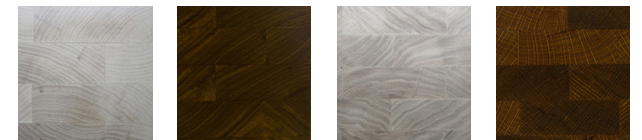


## N3 CHANDELIER

DESCRIPTION	Rotationally-symmetrical, hand-sculpted pendant lamp. Solid wood body, four lamps behind acrylic diffusers (removable with screws). Suspended via lamp wires from a 3-armed canopy (36" dia.), mounted directly to junction box
UL STATUS	UL listed (CE compliant)
DIMENSIONS	91 × 91 × 18 cm (drop variable)
LIGHT SOURCE	4 dimmable LED bulbs, 60 W, 2700 k
CANOPY STYLE	please see CANOPY STYLES on page 28 for details
LEAD TIME	8-10 weeks
NET PRICE	4490 €
CUSTOMIZATION	some custom options are available for this piece; please call/ email for more information

### MATERIALS/FINISHES

The N3 Chandelier is available in bleached cherry, black walnut and bleached walnut in a clear lacquer finish; the stained white oak features a hand-rubbed oil & wax finish



Bleached Cherry

Black Walnut

Bleached Walnut

Stained White Oak



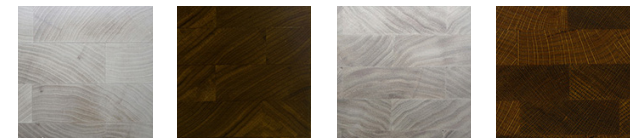


## N3-Au CHANDELIER

DESCRIPTION	Rotationally-symmetrical, hand-sculpted pendant lamp. Solid wood body, gold/silver leafing on interior of lamp housing. Suspended via lamp wires from a 3-armed canopy (36" dia.), mounted directly to junction box
UL STATUS	UL listed (CE compliant)
DIMENSIONS	91 × 91 × 18 cm (drop variable)
LIGHT SOURCE	dimable LED bulbs (three 75 W, one 100 W), 2700 k
CANOPY STYLE	please see CANOPY STYLES on page 28 for details
LEAD TIME	8 - 10 weeks
NET PRICE	4720 €
CUSTOMIZATION	some custom options are available for this piece; please call/ email for more information

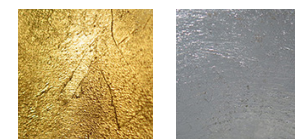
### MATERIALS/FINISHES

The N3-Au Chandelier is available in bleached cherry (shown above), black walnut and bleached walnut in a clear lacquer finish; the stained white oak features a hand-rubbed oil & wax finish



Bleached Cherry    Black Walnut    Bleached Walnut    Stained White Oak

### LEAFING OPTIONS



Gold Leaf    Silver Leaf

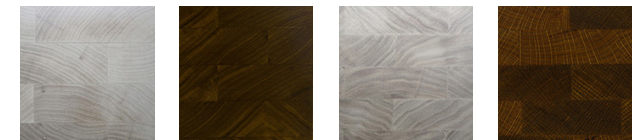


## N3 PENDANT

DESCRIPTION	Rotationally-symmetrical, hand-sculpted pendant lamp. Solid wood body, three lamps behind acrylic diffusers (removable with screws). Suspended via lamp wires from a low-profile canopy mounted directly to junction box
UL STATUS	UL listed (CE compliant)
DIMENSIONS	102 × 18 × 15 cm (drop variable)
LIGHT SOURCE	3 dimmable LED bulbs, 60 W, 2700 k
CANOPY STYLE	please see CANOPY STYLES on page 28 for details
LEAD TIME	8 weeks
NET PRICE	2960 €
CUSTOMIZATION	some custom options are available for this piece; please call/ email for more information

### MATERIALS/FINISHES

The N3 Pendant is available in bleached cherry, black walnut and bleached walnut in a clear lacquer finish; the stained white oak (shown above) features a hand-rubbed oil & wax finish



Bleached Cherry

Black Walnut

Bleached Walnut

Stained White Oak



## N3-Au PENDANT

DESCRIPTION	Rotationally-symmetrical, hand-sculpted pendant lamp. Solid wood body, three lamps, gold/silver leafing on the interior of lamp housing. Suspended via lamp wires from a 3-armed canopy (36" dia.), mounted directly to junction box
UL STATUS	UL listed (CE compliant)
DIMENSIONS	102 × 18 × 15 cm (drop variable)
LIGHT SOURCE	3 dimmable LED bulbs, 75 W, 2700 k
CANOPY STYLE	please see CANOPY STYLES on page 28 for details
LEAD TIME	8 weeks
NET PRICE	3185 €
CUSTOMIZATION	some custom options are available for this piece; please call/ email for more information

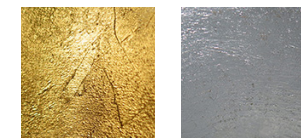
### MATERIALS/FINISHES

The N3 Chandelier is available in bleached cherry, black walnut (shown above) and bleached walnut in a clear lacquer finish; the stained white oak features a hand-rubbed oil & wax finish



Bleached Cherry    Black Walnut    Bleached Walnut    Stained White Oak

### LEAFING OPTIONS



Gold Leaf    Silver Leaf



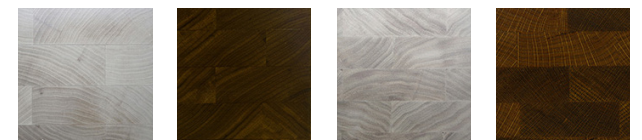


## N2 PENDANT

DESCRIPTION	Rotationally-symmetrical, hand-sculpted pendant lamp. Solid wood body, two lamps behind acrylic diffusers (removable with screws). Suspended via lamp wires from a canopy mounted directly to junction box
UL STATUS	UL listed (CE compliant)
DIMENSIONS	58 × 18 × 15 cm (drop variable)
LIGHT SOURCE	2 dimmable LED bulbs, 60 W, 2700 k
CANOPY STYLE	please see CANOPY STYLES on page 28 for details
LEAD TIME	6 weeks
NET PRICE	1970 €
CUSTOMIZATION	some custom options are available for this piece; please call/ email for more information

### MATERIALS/FINISHES

The N2 Pendant is available in bleached cherry, black walnut and bleached walnut in a clear lacquer finish; the stained white oak (shown above) features a hand-rubbed oil & wax finish



Bleached Cherry

Black Walnut

Bleached Walnut

Stained White Oak

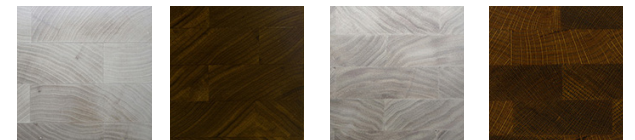


## N2-Au PENDANT

DESCRIPTION	Rotationally-symmetrical, hand-sculpted pendant lamp. Solid wood body, two lamps, gold/silver leafing on interior of lamp housing. Suspended via lamp wires from a canopy mounted directly to junction box
UL STATUS	UL listed (CE compliant)
DIMENSIONS	58 × 18 × 15 cm (drop variable)
LIGHT SOURCE	2 dimmable LED bulbs, 75 W, 2700 k
CANOPY STYLE	please see CANOPY STYLES on page 28 for details
LEAD TIME	6 - 8 weeks
NET PRICE	2260 €
CUSTOMIZATION	some custom options are available for this piece; please call/email for more information

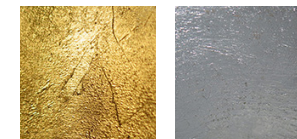
### MATERIALS/FINISHES

The N2-Au Pendant is available in bleached cherry, black walnut and bleached walnut in a clear lacquer finish; the stained white oak (shown above) features a hand-rubbed oil & wax finish



Bleached Cherry    Black Walnut    Bleached Walnut    Stained White Oak

### LEAFING OPTIONS



Gold Leaf    Silver Leaf

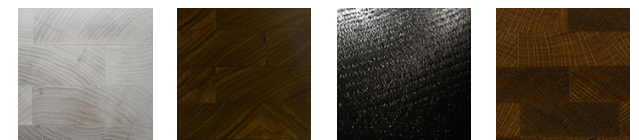


## N2-D PENDANT

DESCRIPTION	Rotationally-symmetrical, hand-sculpted pendant lamp. Solid wood body, two lamps behind acrylic diffusers (removable with screws). Suspended via lamp wires from a canopy mounted directly to junction box
UL STATUS	UL listed (CE compliant)
DIMENSIONS	58 × 18 × 15 cm (drop variable)
LIGHT SOURCE	2 dimmable LED bulbs, 60 W, 2700 k
CANOPY STYLE	please see CANOPY STYLES on page 28 for details
LEAD TIME	8 weeks
NET PRICE	2185 €
CUSTOMIZATION	some custom options are available for this piece; please call/ email for more information

### MATERIALS/FINISHES

The N2-D Pendant is available in bleached cherry, black walnut and ebonized oak (shown above) in a clear lacquer finish; the stained white oak features a hand-rubbed oil & wax finish



Bleached Cherry

Black Walnut

Ebonized Oak

Stained White Oak



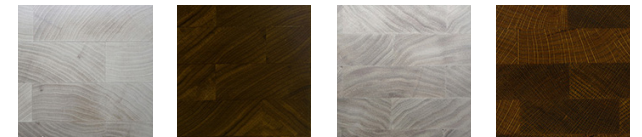


## N2-D SCONCE

DESCRIPTION	Rotationally-symmetrical, hand-sculpted sconce. Solid wood body, acrylic diffusers, steel supports/escutcheon plate. Mounts to the wall with cleats
UL STATUS	UL listed (CE compliant)
DIMENSIONS	58 x 18 x 20 cm
LIGHT SOURCE	2 dimmable LED bulbs, 60 W, 2700 k
LEAD TIME	8 - 10 weeks
NET PRICE	2260 €
CUSTOMIZATION	some custom options are available for this piece; please call/ email for more information

### MATERIALS/FINISHES

The N2-D Sconce is available in bleached cherry, black walnut (shown above) and bleached walnut in a clear lacquer finish; the stained white oak features a hand-rubbed oil & wax finish



Bleached Cherry

Black Walnut

Bleached Walnut

Stained White Oak



## N4 TABLE LAMP

DESCRIPTION	Rotationally-symmetrical, hand-sculpted, solid wood table lamp with glass globe.
UL STATUS	UL listed (CE compliant)
DIMENSIONS	30 × 30 × 36 cm
LIGHT SOURCE	1 dimmable LED bulb, 60W, 2700 k
LEAD TIME	10 weeks
NET PRICE	1310 €
CUSTOMIZATION	no custom options are available for this lamp
MATERIALS/FINISHES	the N4 Table Lamp is currently only available in bleached cherry with a lacquer finish



## N1-Au FLOOR LAMP

DESCRIPTION	Scroll-shaped, sculpted wooden floor lamp with blackened steel base, spiralling center-core covered in gold/silver leafing
UL STATUS	UL listed (CE compliant)
DIMENSIONS	25 × 25 × 99 cm
LIGHT SOURCE	1 dimmable LED bulb, 40 W, 2700 k
LEAD TIME	6 -8 weeks
NET PRICE	1950 €
CUSTOMIZATION	custom options are not currently available for this piece

### MATERIALS/FINISHES

The N1-Au Floor Lamp is available in walnut with gold leaf (shown above) or bleached cherry with silver leaf



Walnut

Bleached Cherry

Gold Leaf

Silver Leaf



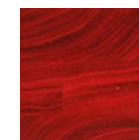


## RW1 TABLE LAMP

DESCRIPTION	Hand-sculpted table lamp with wooden frame surrounding glass globe
UL STATUS	UL listed (CE compliant)
DIMENSIONS	30 × 30 × 46 cm
LIGHT SOURCE	1 dimmable LED bulb, 60 W, 2700 k
LEAD TIME	10 weeks
NET PRICE	1425 €
CUSTOMIZATION	custom options are not available for this piece

### MATERIALS/FINISHES

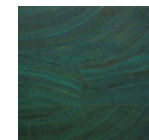
The RW1 Table Lamp is available in bleached cherry with a choice of three different stain colors on the inside.



Deep Red



Orange-Yellow



Torquoise

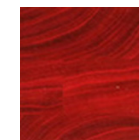


## RW3 CHANDELIER

DESCRIPTION	Hand-sculpted pendant lamp with wooden frame surrounding three bulbs supported by brass components
UL STATUS	UL listed (CE compliant)
DIMENSIONS	61 × 61 × 20 cm (drop variable)
LIGHT SOURCE	3 dimmable LED bulbs, 40 W, 2700 k
LEAD TIME	10 weeks
NET PRICE	2075 €
CUSTOMIZATION	custom options are not available for this piece

### MATERIALS/FINISHES

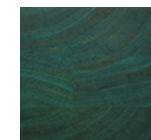
The RW3 Chandelier is available in bleached cherry with a choice of three different stain colors on the inside.



Deep Red



Orange-Yellow



Torquoise





## RW1 PENDANT

DESCRIPTION	Hand-sculpted pendant lamp with wooden frame surrounding single bulb supported by brass components
UL STATUS	UL listed (CE compliant)
DIMENSIONS	30 × 30 × 25 cm (drop variable)
LIGHT SOURCE	1 dimmable LED bulb, 60 W, 2700 k
LEAD TIME	8 weeks
NET PRICE	1580 €
CUSTOMIZATION	custom options are not available for this piece

### MATERIALS/FINISHES

The RW3 Chandelier is available in bleached cherry with a choice of three different stain colors on the inside.



Deep Red

Orange-Yellow

Torquoise





## CUBIC CLOUD LAMP

DESCRIPTION	Pendant lamp consisting of a cluster of offset acrylic boxes lit from a single light source in the center.
UL STATUS	UL listed (CE compliant)
DIMENSIONS	91 × 91 × 91 cm (drop variable)
LIGHT SOURCE	1 dimmable LED bulb, 75 W, 2700 k
CANOPY STYLE	polished chrome canopy and stem
LEAD TIME	6 - 8 weeks
NET PRICE	3570 €
CUSTOMIZATION	custom sizing is available for this piece; call/email for details



## SS1 TABLE LAMP

DESCRIPTION	Table lamp in the form of a truncated tetrahedron, consisting of acrylic boxes covered with bleached maple veneer. Lamp appears as a solid wooden volume when off, a subtle lantern when on. Top and bottom sections of lamp turn on/off independently via a three-way switch
UL STATUS	not UL listed
DIMENSIONS	30 × 30 × 91 cm
LIGHT SOURCE	2 dimmable LED bulbs, 60 W, 2700 k. Top and bottom section of lamp come apart to change bulbs
LEAD TIME	10 weeks
NET PRICE	2370 €
CUSTOMIZATION	custom options are not available for this lamp
MATERIALS/FINISHES	SS1 Table Lamp is available only in bleached maple with a lacquer finish



## N2 COFFEE TABLE

### DESCRIPTION

Rotationally-symmetrical, hand-sculpted coffee table made from solid, stacked-laminate wood construction with tempered glass top

### DIMENSIONS OF BASE

81 × 81 × 41cm

### DIMENSIONS OF GLASS

123 × 123 × 1.2 cm

### LEAD TIME

8 - 10 weeks

### NET PRICE

4450 €

### CUSTOMIZATION

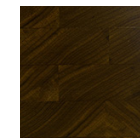
some custom options are available for this piece; please call/ email for more information

### MATERIALS/FINISHES

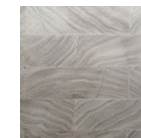
The N2 Coffee Table is available in bleached cherry (shown above), black walnut, bleached walnut, and cherry with a blue stain, all finished with clear lacquer



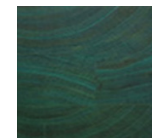
Bleached Cherry



Black Walnut



Bleached Walnut



Cherry, Blue Stain



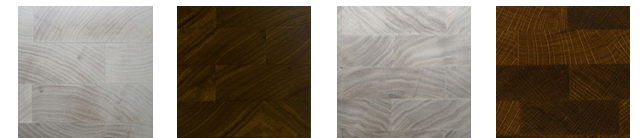


## N3 COFFEE TABLE

DESCRIPTION	Rotationally-symmetrical, three-legged coffee table made from solid, stacked-laminate wood construction with tempered glass top
DIMENSIONS OF BASE	91 × 91 × 41 cm
DIMENSIONS OF GLASS	123 × 123 × 1.2 cm
LEAD TIME	6 - 8 weeks
NET PRICE	4075 €
CUSTOMIZATION	some custom options are available for this piece; please call/ email for more information

### MATERIALS/FINISHES

The N3 Coffee Table is available in bleached cherry, black walnut (shown above) and bleached walnut in a clear lacquer finish; the stained white oak features a hand-rubbed oil & wax finish



Bleached Cherry

Black Walnut

Bleached Walnut

Stained White Oak

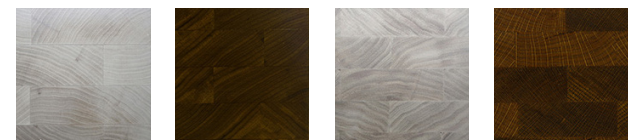


## N3 DINING TABLE

DESCRIPTION	Rotationally-symmetrical, three-legged dining table made from solid, stacked-laminate wood construction with tempered glass top
DIMENSIONS OF BASE	122 × 122 × 76 cm
DIMENSIONS OF GLASS	178 × 178 × 1.2 cm
LEAD TIME	12 weeks
NET PRICE	6375 €
CUSTOMIZATION	some custom options are available for this piece; please call/email for more information

### MATERIALS/FINISHES

The N3 Dining Table is available in bleached cherry (shown), black walnut and bleached walnut in a clear lacquer finish; the stained white oak features a hand-rubbed oil & wax finish



Bleached Cherry

Black Walnut

Bleached Walnut

Stained White Oak





## N2 DESK

### DESCRIPTION

Rotationally-symmetrical, hand-sculpted desk made from solid, stacked-laminate wood construction with tempered glass top

### DIMENSIONS OF BASE

102 × 41 × 74 cm

### DIMENSIONS OF GLASS

132 x56 × 1.2 cm

### LEAD TIME

12 weeks

### NET PRICE

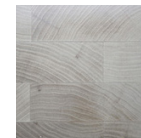
5410 €

### CUSTOMIZATION

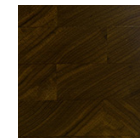
some custom options are available for this piece; please call/ email for more information

### MATERIALS/FINISHES

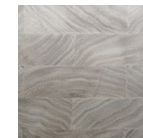
The N2 Desk is available in bleached cherry (shown above), black walnut and bleached walnut in a clear lacquer finish; the stained white oak features a hand-rubbed oil & wax finish



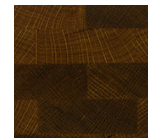
Bleached Cherry



Black Walnut



Bleached Walnut



Stained White Oak



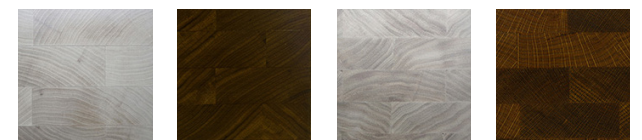


## N2 TÊTE-À-TÊTE

DESCRIPTION	Rotationally-symmetrical, hand-sculpted tête-à-tête or coffee table base made from solid, stacked-laminate wood construction
DIMENSIONS OF BASE	124 × 43 × 43 cm
LEAD TIME	10 - 12 weeks
NET PRICE	5910 € (without glass)
CUSTOMIZATION	some custom options are available for this piece; please call/email for more information

### MATERIALS/FINISHES

The N2 Tête-à-Tête is available in bleached cherry, black walnut (shown above) and bleached walnut in a clear lacquer finish; the stained white oak features a hand-rubbed oil & wax finish



Bleached Cherry

Black Walnut

Bleached Walnut

Stained White Oak

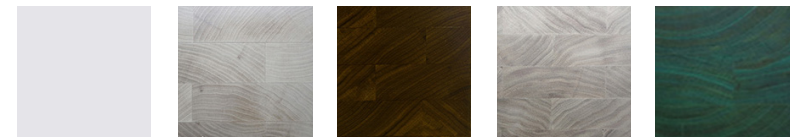


## N2 DINING TABLE

DESCRIPTION	Rotationally-symmetrical, hand-sculpted dining table made from solid, stacked-laminate wood construction with tempered glass top
DIMENSIONS OF BASE	203 × 81 × 74 cm
DIMENSIONS OF GLASS	274 × 97 × 1.9 cm
LEAD TIME	12 - 14 weeks
NET PRICE	10725 €
CUSTOMIZATION	some custom options are available for this piece; please call/ email for more information

### MATERIALS/FINISHES

The N2 Dining Table is available in solid white (shown) or black lacquer, bleached cherry or black walnut in a clear lacquer finish, or stained cherry in a clear lacquer finish



Solid White

Bleached Cherry

Black Walnut

Bleached Walnut

Cherry, Blue Stain



## N2 LOVESEAT

### DESCRIPTION

Rotationally-symmetrical, hand-sculpted loveseat with opposing seating positions, made from solid, stacked-laminate wood construction

### DIMENSIONS

122 × 53 × 66 cm

### LEAD TIME

12 weeks

### NET PRICE

5085 €

### CUSTOMIZATION

custom options are currently not available for this piece

### MATERIALS/FINISHES

The N2 Loveseat is available in bleached cherry (shown), black walnut and bleached walnut in a clear lacquer finish; the stained white oak features a hand-rubbed oil & wax finish



Bleached Cherry

Black Walnut

Bleached Walnut

Stained White Oak





## N2 BENCH

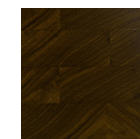
DESCRIPTION	Rotationally-symmetrical, hand-sculpted bench made from solid, stacked-laminate wood construction
DIMENSIONS	132 × 41 × 46 cm
LEAD TIME	10 weeks
NET PRICE	4585 €
CUSTOMIZATION	some custom options are available for this piece; please call/email for more information

### MATERIALS/FINISHES

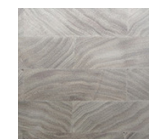
The N2 Bench is available in bleached cherry (shown above), black walnut and bleached walnut in a clear lacquer finish



Bleached Cherry



Black Walnut



Bleached Walnut

AARON SCOTT DESIGN



WWW.AARONSCOTTDESIGN.COM

INFO@AARONSCOTTDESIGN.COM

BROOKLYN, NY +1 541 227 1614

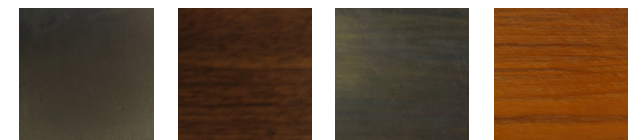


## CAMILLE CHAIR

DESCRIPTION	Dining/casual chair with sand-cast metal frame, wooden slats
DIMENSIONS	64 × 58 × 81 cm
LEAD TIME	12 weeks
NET PRICE	1980 € (minimum order of 2 chairs)
CUSTOMIZATION	some custom options are available for this piece; please call/email for more information

### MATERIALS/FINISHES

The Camille Chair is available in aluminum/walnut or bronze/teak (safe for outdoor use)



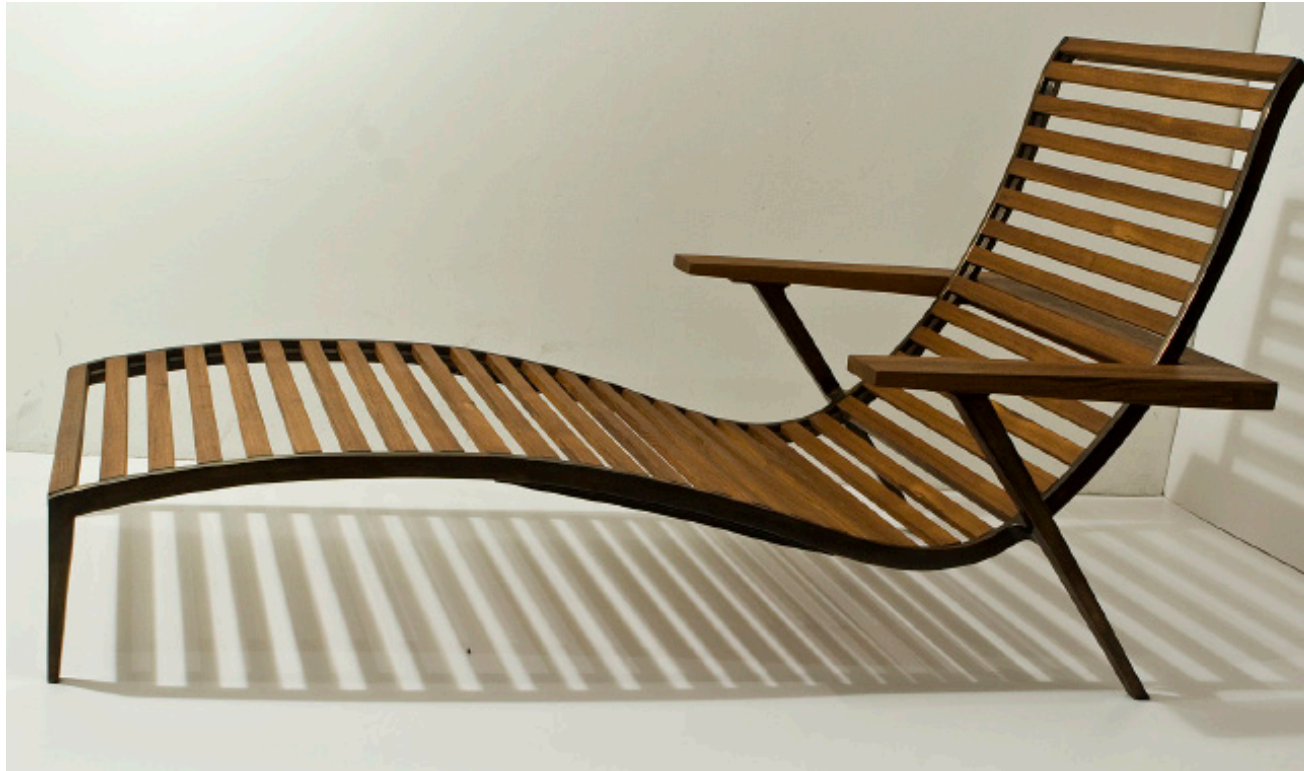
Aluminum

Black Walnut

Bronze

Teak





## CAMILLE CHAISE

DESCRIPTION

Chaise Longue with sand-cast metal frame, wooden slats

DIMENSIONS

137 × 71 × 79 cm

LEAD TIME

16 weeks

NET PRICE

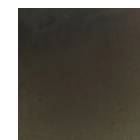
4210 € (minimum order of 2 chairs)

CUSTOMIZATION

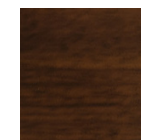
custom options are currently not available for this piece

MATERIALS/FINISHES

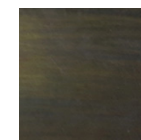
The Camille Chaise is available in aluminum/walnut or bronze/teak (safe for outdoor use)



Aluminum



Black Walnut



Bronze



Teak





# CANOPY STYLES FOR N-SERIES LIGHTING

All canopies cover the junction box and mount to the ceiling using hidden cleats. Detailed installation instructions and all required hardware are provided

<p>N3 Chandelier canopy</p>	<p>The N3 Chandelier canopy is available in solid wood, either painted or matching wood species (see Fig. 1), or metal with a recessed wood top (see Fig. 3). Wood options are included in the base price; metal is a upcharge</p>	<p>Fig. 1</p>
<p>N3 Pendant canopy</p>	<p>The N3 Pendant canopy is available in solid wood, either painted or matching wood species (see Fig. 2), or metal with a recessed wood top (see Fig. 3). Wood options are included in the base price; metal is a €200 upcharge</p>	<p>Fig. 2</p>
<p>N2 Pendant canopy</p>	<p>The N2 Pendant canopy is available in solid wood, either painted or matching wood species (see Fig. 2), or metal with a recessed wood top (see Fig. 3). Wood options are included in the base price; metal is a €165 upcharge</p>	<p>Fig. 3</p>



## MATERIALS, MAINTENANCE & CARE

### STACKED LAMINATION

Sculpted wood pieces by Aaron Scott Design are built using the process known as 'stacked lamination': solid wood is glued up in stacked layers, and once the desired volume has been built out, carving tools are used to sculpt the final shape. Relying solely on grain direction and proper gluing technique, stacked lamination yields remarkable strength and stability

### WOOD SELECTION

Aaron Scott Design uses only FSC (Forest Stewardship Council)-certified domestic hardwoods

### FINISHES

Aaron Scott Design uses WB (Water-Based) stains, low-VOC (Volatile Organic Compound) lacquers, traditional finishing oils (boiled linseed and tung oils), and paste waxes

### MAINTENANCE & CARE

For pieces finished with lacquer, a warm, wet cloth should be used. For bringing out the shine or cleaning more soiled lacquer surfaces, silicone-based wood cleaners such as 'Pledge' work well. Care should always be taken with lacquer finishes, as they are easily scratched or stained. For oil/wax, the surface can be periodically rejuvenated using a product such as Wood Orange, or furniture/paste wax (following manufacturer's directions)



## SAMPLES, PAYMENT & SHIPPING

### SAMPLES

There is no charge for wood & finish samples (standard options only) so long as samples are returned within 30 days. Otherwise a fee of \$75 is charged, which will be deducted from the deposit once an order is placed

### PAYMENT

Aaron Scott Design accepts payments by check, paypal and major credit cards. Orders require a 50% deposit, the balance being payable upon delivery

### SHIPPING

Within the continental United States: lighting pieces are crated and shipped via UPS Ground; larger furniture pieces are blanket-wrapped and shipped with a white gloves shipper. Please contact Aaron Scott Design for information on international shipping